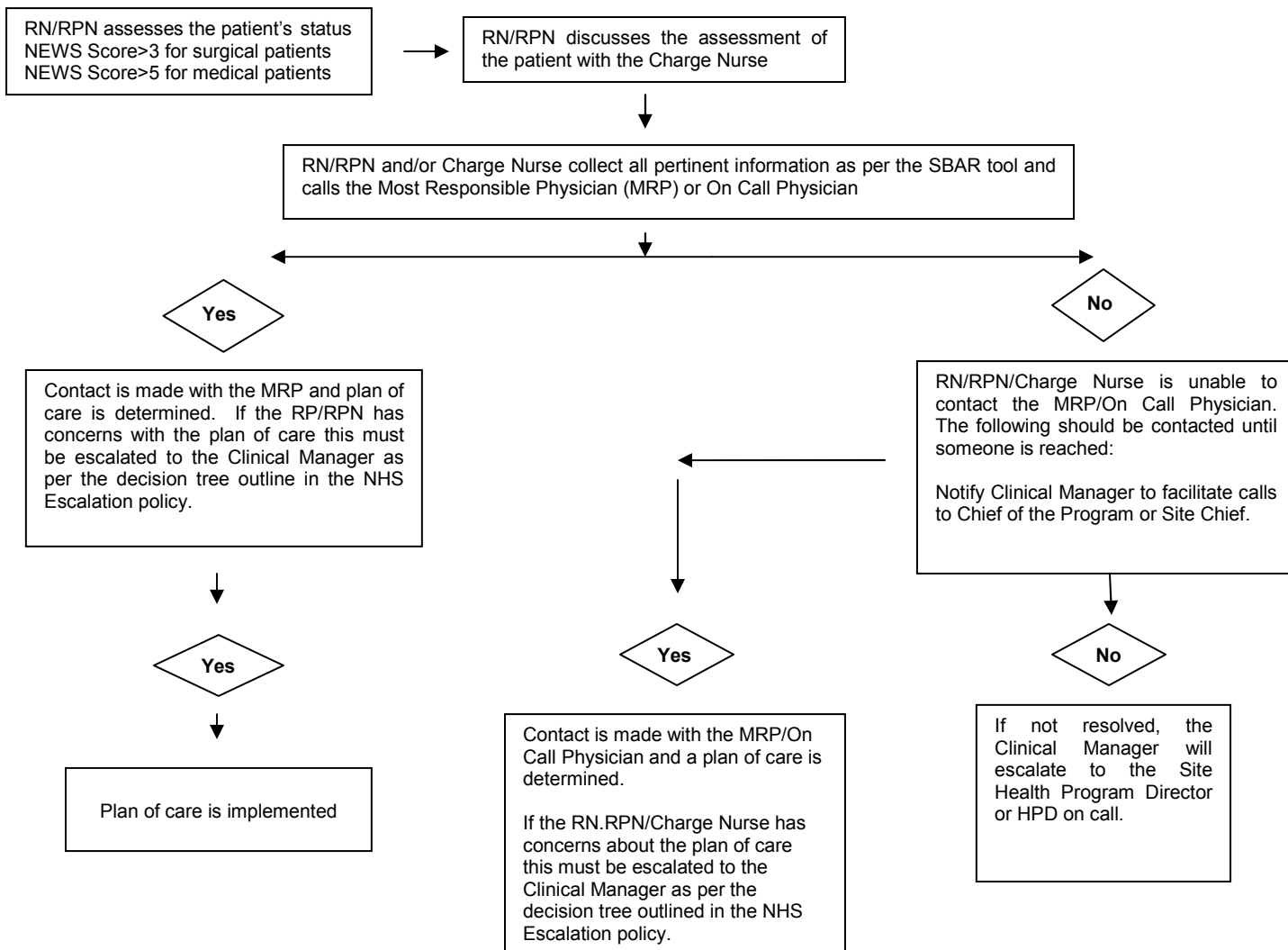




NIAGARA EARLY WARNING SYSTEM GRAPHIC SHEET

Date dd/mm/yy										
Time hh/mm										
Temperature	40									O
	39									Y
	38									W
	37									W
	36									Y
	35									O
Blood Pressure News score uses systolic pressure	210									O
	200									Y
	190									Y
	180									W
	170									W
	160									W
	150									W
	140									W
	130									W
	120									W
	110									W
	100									Y
	90									Y
	80									O
70									R	
60									R	
50									R	
Heart Rate	170									R
	160									R
	150									R
	140									R
	130									O
	120									O
	110									Y
	100									W
	90									W
	80									W
	70									W
	60									W
	50									Y
	40									O
30									O	
20									O	
SaO2	100									W
	90-92									W
	85-89									Y
	85									O
FIO2 %										
Respiratory Rate	40									R
	36									R
	32									R
	28									O
	24									O
	20									Y
	16									W
	12									W
8									O	
Neuro	Awake									W
	Confused									Y
	Pain									O
	Non Respons.									R
Score										
News Score	0 W = white	1 Y = yellow	2 O = orange	3 R = red	Contact Medical Help if: Surgical Patients NEWS>3 Medical Patients NEWS>5					

## DECISION TREE



### S.B.A.R.

#### Situation, Background, Assessment, Recommendation

Before calling the physician ensure that you act upon the following:

- complete a head – toe assessment
- review the chart for the appropriate physician to call
- follow the parameters of the SBAR for the collection of patient data; review the nurses and physicians notes from the previous shift
- have the chart available during the call to review any information requested by the physician

#### **SITUATION - What is the situation that you are calling about?**

- identify self, unit, patient, room number
- Briefly state the problem, what it is, when it happened or started, and how severe?

#### **BACKGROUND - pertinent background information**

- admitting diagnosis and admission date
- list of current medications, IV fluids
- Provide the physician the history of the NEWS score
- Indicate to the physician the NEWS score that has created the flagging for the call
- lab results with an emphasis on the abnormal
- other clinical information
- Code Status

#### **ASSESSMENT – What is the Nurses assessment of the situation based on the information/data collected?**

#### **RECOMMENDATION – What is the Nurse's recommendations or what does he/she want from the Physician.**

- notification that patient has been admitted
- patient needs to be seen now
- suggestion re an order change for the clinical situation that is being dealt with